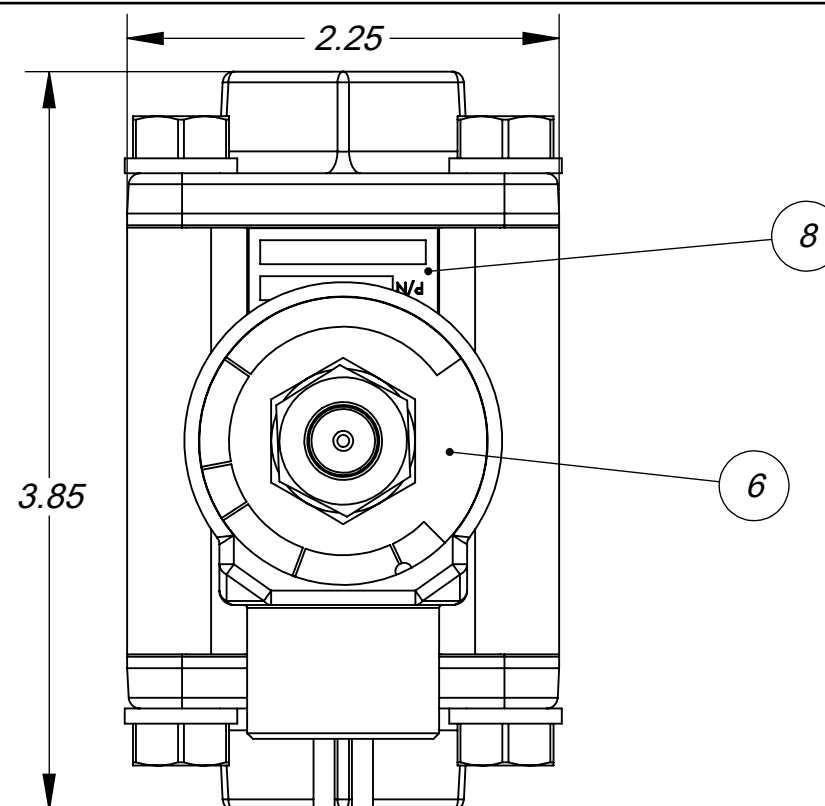


C310406

310406-SM-CC-EC-VV

NOTES:

1. PILOT PRESSURE TO MEDIA PRESSURE RATIO 1:1
2. OPERATING PRESSURE: 150 PSI MAX
3. TEMPERATURE RANGE: -30° F TO 225° F
4. PRIMARY OPERATOR: DIRECT SOLENOID (MULTIPURPOSE NC OR NO)
5. SERVICE MEDIA: LIQUID AND INERT GASES
6. SEAL MATERIAL: SEE TABLE SLEEVE MAT. OPTIONS (SM) (FOR ALL OTHERS CONSULT THE FACTORY)
7. SOLENOID VOLTAGE: AC OR DC
8. FOR MAXIMUM SLEEVE LIFE, THE PILOT TO MEDIA PRESSURE DIFFERENTIAL SHOULD NOT EXCEED 20 PSI. FOR MEDIA PRESSURE BELOW 50 PSI, THE PILOT PRESSURE IS MEDIA PRESSURE PLUS 15 PSI.



ITEM NO.	PART NUMBER	DESCRIPTION	QTY.
1	01-0201	LOCKWASHER, REGULAR, 5/16, ZINC	8
2	01-0706	SCREW, 5/16-18 X .75 ZN	8
3	01-2023-2	SCR., DRIVE #2 X .188	2
4	03-1179	BODY, P/P SOL. ADAPTOR	1
5	03-1180	EXHAUST ADAPTOR	1
6	03-4001	NAMEPLATE, SERIES 20 SOL. OPP.	1
7	04-01-010	O-RING, BUNA 70, #010	1
8	20-1889	NAME PLATE, TUBE-O-MATIC	1
9	20-1893	BODY 1/4 3/8 1/2 NPT	1
10	SE TBL (CC)	CENTER CORE	1
11	SEE TBL (EC)	END CAP	2
12	SEE TBL (SM)	SLEEVE	1
13	SEE TBL (VV)	SOLENOID ASSY	1

SLEEVE MATERIAL OPTIONS (SM)

CODE	MATERIAL	PART NO.
STD	BUNA - N	20-1037
26	VITON	20-1031
29	EPR	20-1032

CENTER CORE OPTIONS (CC)

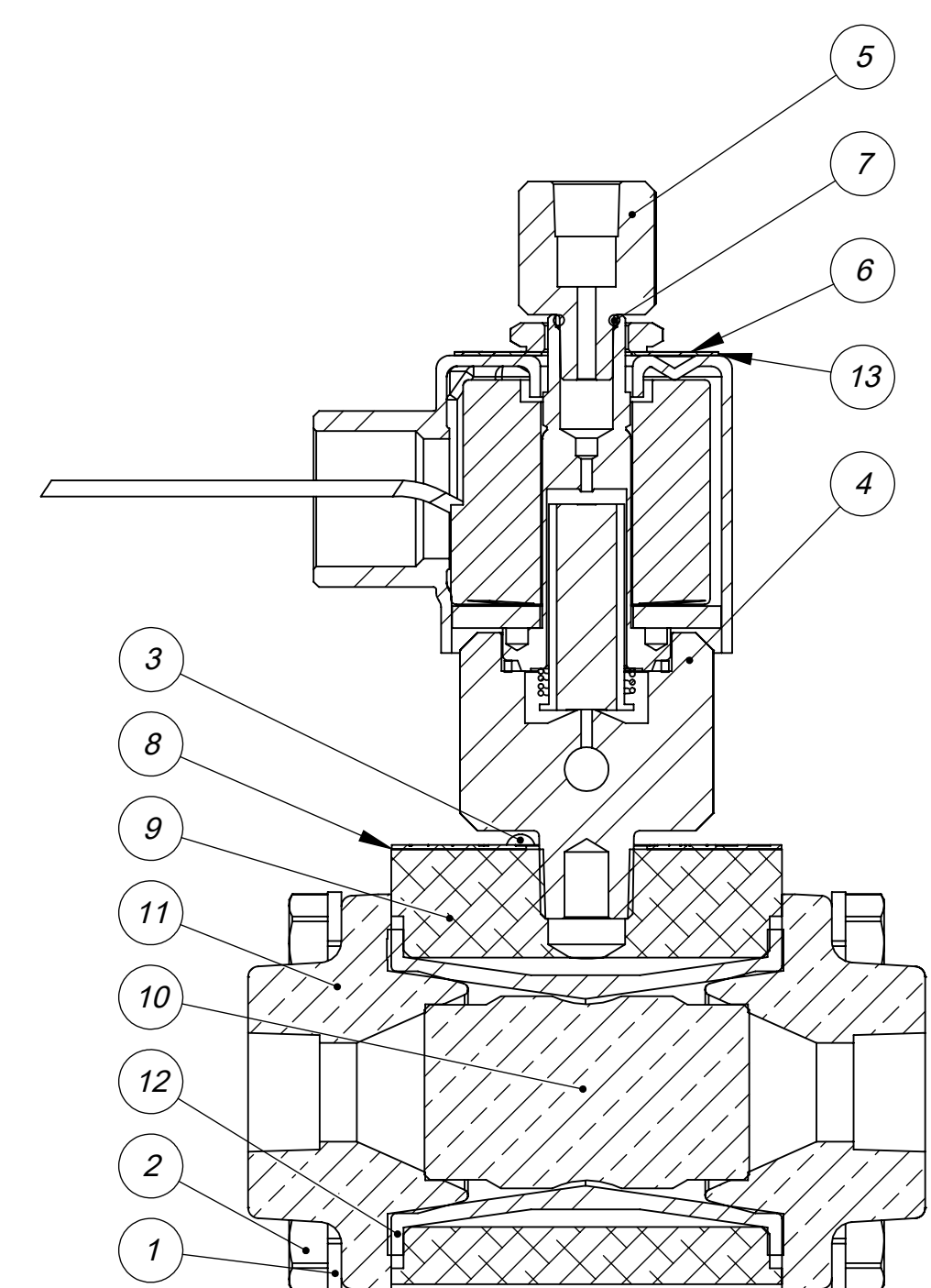
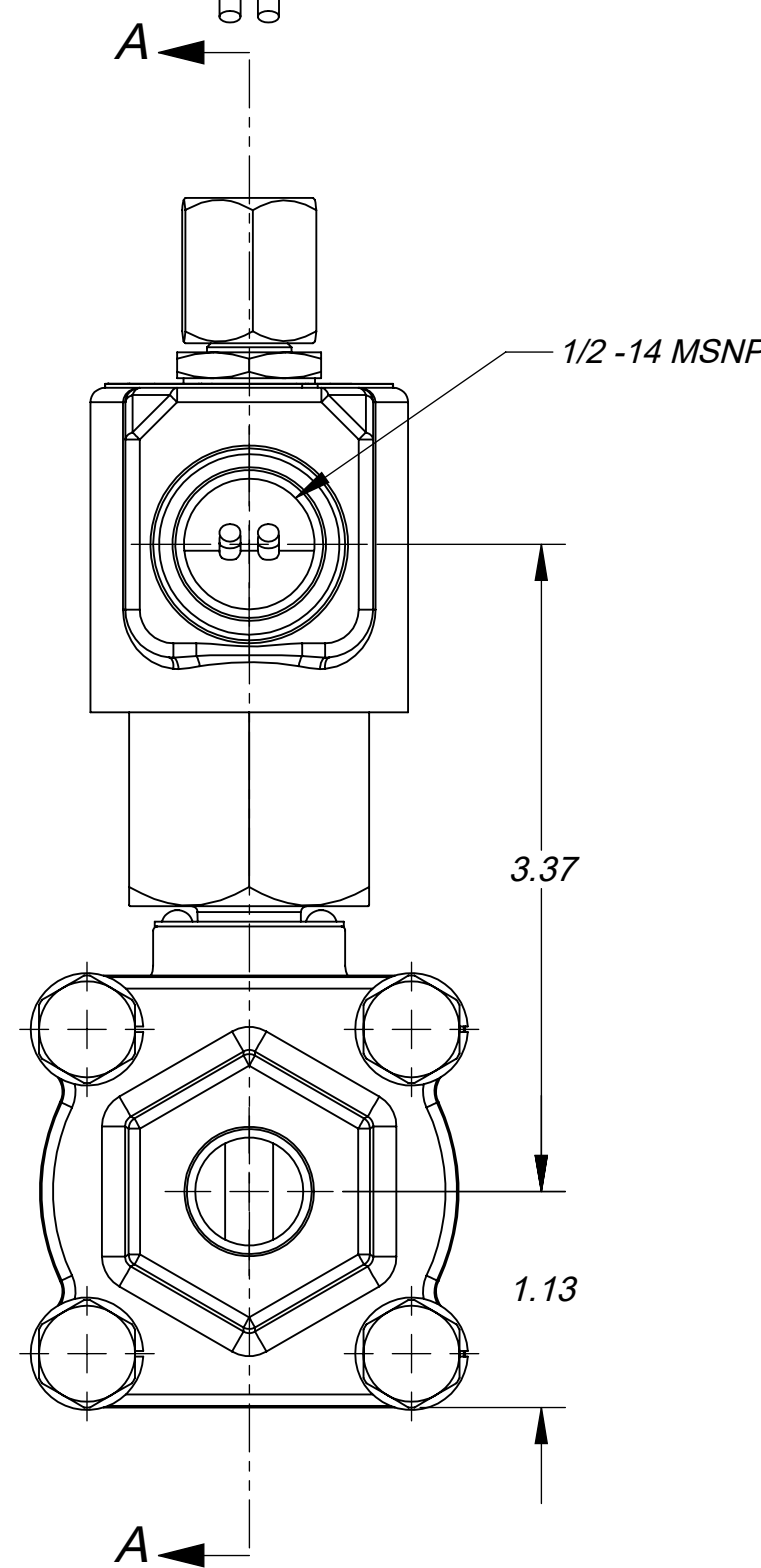
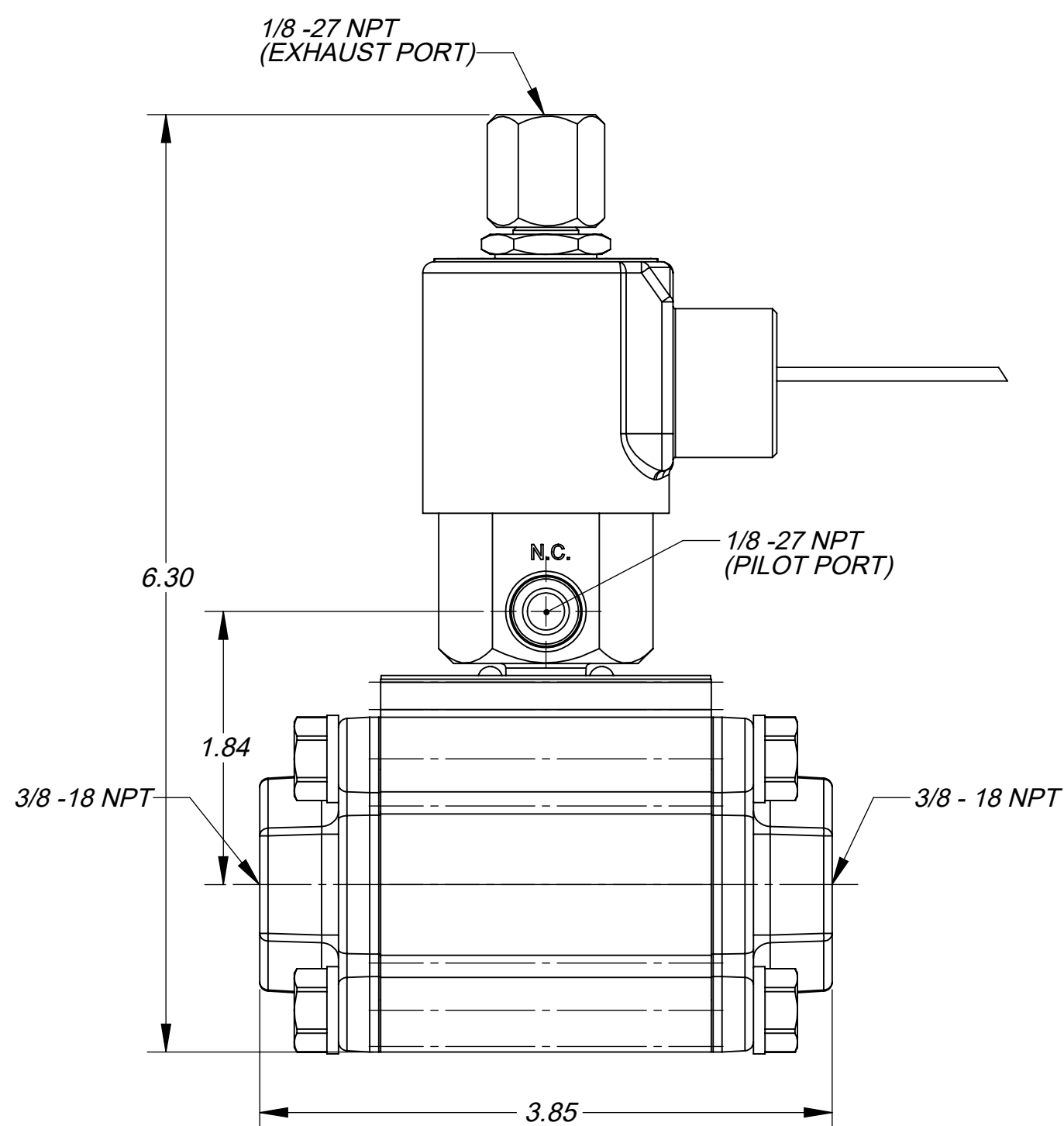
CODE	MATERIAL	PART NO.
STD	NI PLT BRASS	20-1038
43	PVC	20-1361
45	STNLESS STL	20-1059
46	TEFLON	20-1058

END CAP OPTIONS (EC)

CODE	MATERIAL	PART NO.
STD	NI PLT BRNZE	20-1043
57	PVC	20-1066
59	316 STNLESS	20-1063

SOLENOID OPTIONS (VV)

CODE	VOLTAGE	PART NO.
-1	120V/60Hz	03-3701
-2	240V/60Hz	03-3702
-3	480V/60Hz	03-3703
-4	6V DC	03-3704
-5	12V DC	03-3705
-6	24V DC	03-3706
-7	24V/60Hz	03-3707



SECTION A-A

THIS DOCUMENT AND ITS CONTENTS ARE THE PROPERTY OF LEXAIR, INC. THEY ARE FURNISHED TO YOU ON THE FOLLOWING CONDITIONS: NO RIGHT OR LICENSE IN RESPECT OF THIS DOCUMENT OR ITS CONTENTS IS GIVEN OR WANTED IN SUPPLYING THE DOCUMENT TO YOU. THIS DOCUMENT OR ITS CONTENTS ARE NOT TO BE USED OR REPRODUCED IN ANY MANNER INCONSISTENT WITH THE RIGHTS OF LEXAIR, INC. OR TO ITS DETRIMENT AND ARE NOT TO BE COPIED, REPRODUCED, OR DISCLOSED OF, EXCEPT WITH ITS PRIOR WRITTEN CONSENT.

REVISIONS

REV.	DESCRIPTION	DATE
B	REDRAWN TO CURRENT ENG. STDS. ECL: 06113 10-16-06 HWP TPO	
C	UPDATED TO CURRENT ENG. STD. ECL: 21032 06-21-21 TES	

ECL: 06113	Tolerances Unless Otherwise Specified:		MATERIAL SPEC.	PC. NO.: 310406-X
	TYPE	FINISHED AS CAST	SEE TABLE	MADE FROM:
	DEC .00	± .015" ± .030"	PROCESS SPEC. SEE TABLE	MODEL FILE: 310404.SLDASM
	DEC .000	± .005" ± .010"		CAD FILE: 310406.slddrw
FRACTIONAL	± 1/64" ± 1/32"	C 310406		
ANGLES *	± 1/2° ± 1°		SHEET NO. 1 of 1 SHEETS	
FINISH 175 µ in.			SCALE 1:1	APPROX. WT. 3.680 lbs.
SO, T-O-M, 3/8" NPT				
Lexair, Inc.			DRAWN HWP	CHECKED TPO
2025 Mercer RD, Lexington, Kentucky 40511			APRVD. TPO	